

By Arrangement with Stage Right Creative Ltd

PEACEHAVENPLAYERS

PRESENT Theatre Group

Cinderella

By Alan P Frayn

4TH - 7TH

DECEMBER 2013

MERIDIAN CENTRE

PEACEHAVEN

OFFICIAL PROGRAM

Welcome...



This Christmas we are delighted to be performing one of the classics "Cinderella".

Wendy Clare has put a lot of effort into directing this panto with help from her Assistant Director Tony Garwood, and the cast have worked hard. Judith Foot, Danny Rainsford and I have made a joint effort in the choreography. It was not an easy start to rehearsals, with some cast members having to pull out and then finding others to replace them. So a huge thank you to those who stepped in, we are very grateful.

This has been my first show as Chair person and I have found it a bit daunting, but everyone has been very supportive. I would like to welcome

all the new Committee members that have joined us and say a big thank you to those who have stepped down but still continue to support us and dedicate their time to help.

Looking to 2014 we are aiming for another spectacular show from Judith Foot, who is in the process of writing Fly Me for next Summer. After her huge success with The Wow Factor last year, we look forward to performing another one of her shows.

We are always looking for new members, so if you fancy treading the boards or helping with scenery or costumes, why not come and join us. We would love to see you.

So all there is left to say is sit back, relax and enjoy the show. Don't forget to shout when you see the ghost!

Mandie Fairhall

Chair person

Directors Notes



Hello all and welcome back to our 2013 presentation of Cinderella. In case you have never heard of this tale before it is a rags to riches love story, with nasty step-sisters who you must hiss and boo all the way through, a magic Fairy Godmother and loveable characters that will need your help. As you sit there tonight please remember that everyone at the front of house, all the stage crew and performers on it, do this as a hobby and give up their time and their talents to entertain you. We try to give a professional performance and if you think you could contribute in any way and are 16 years and over we would love to see you when we return to rehearsals in January next year. I hope you are all in very good voice as it's the one time in the year when we want you to shout back, clap till your hands tingle and sing along with the tunes. Mums don't shush the kids, wake up your granny and all get ready to shout out loud "Button's your bunny!"

Cinderella

Starring

Cinderella

Sian Clare

Buttons

Mandie Fairhall

Barron Horace Hardup

Tony Garwood

Baroness Hatty Hardup

David Whatman

Gertrude

Tori Grant

Grizelda

Judith Foot

Prince Charming

Claire Mullan

Dandini

Russell Sarrou

Bodget

Lynne Enever

Leggett

Dave Grant

Fairy

Maureen Bywaters

Chambers

Lynne Holman

Hagan The Horse

Sarah Harden

Chorus

Patricia Tucket

Carole Grant

Junior Chorus

Daniela Battman

Leanne Battman

Phoebe Coltart

Cinderella

Presenting the dancers from Harlequin Studios!

Buttons

Faith Haywood
Emily Martin
Amy Martin
Imogen Jones
Erin Falconer

Buttons + Bows

(Each show)

Marian Acheampong
Michelle Acheampong
May Wells
Chloe Harwood

Bows

Nicole Bovingdon
Ella Chart
Anya Brewster
Josie Linscer
Hayley Filby



Ballet
Modern
Contemporary
Tap
Jazz
Latin
Ballroom
Street
Disc
Drama

Harlequin Studios

Est. 1973

The number one dance and drama studio in Peacehaven, Sussex

IDTA dance exams & LAMDA drama exams
Adult classes available

Pupils prepared for festival work
Dance & drama classes available for all
ages & abilities

www.harlequinstudios.co.uk

01273 581742

Act One

Prologue

The Village Of Stoneybroke

Scene 1

Trading Places

Scene 2

The Royal Forest

Scene 3

Outside Hardship Hall

Scene 4

The Kitchen

Scene 5

The Land Of Wishes

Scene 6

Act Two

Scene 1

The Place Ballroom

Scene 2

On The Way Home

Scene 3

The Haunted Boudoir

Scene 4

Outside The Hall Again

Scene 5

Back In The Village

Scene 6

An Audience With Buttons

Scene 7

A Final Fond Farewell

Musical Numbers

Act one

Good Time	Cinderella and Company
I'd Like To Teach The World To Sing	Buttons, Cinderella and Company
he Girl Does Nothing	The Ugly Sisters
Three Little Maids	The Ugly Sisters and Baroness
I Do Adore	Cinderella and Prince Charming
Mambo no5	Barron, Baroness, Buttons and The Ugly Sisters
Pure Imagination	Fairy

Act Two

Masquerade	Whole Company
Songbirds	Cinderella and Prince Charming
Rocking All Over The World	Whole Company
One Day Like This	Whole Company

Production

Technical Manager

Michele Harden

Stage Manager

Michele Harden

Crew

Mark Rushton

Jim Jenner

Danny Rainsford

Set Design

Michele Harden

Lighting

Mike Medway

Sound

Dave Stening

Wardrobe

Wendy Clare

Sian Clare

Patricia Tuckett

Maureen Bywaters

Front of House

Lynne Holman and her team

Script by

Alan P Frayn

(provided by Stage Right www.stagerightcreative.com)

Credits

Director

Wendy Clare

Assistant Director

Tony Garwood

Musical Director

Joshua Winstone

Choreography

Mandie Fairhall

Judith Foot

Band

Danny Rainsford

Joshua Winstone

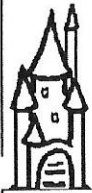
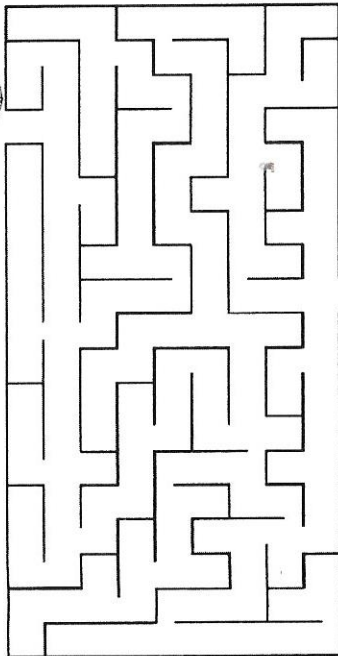
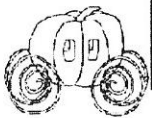
Programme by

Mikey Parsons

Claire Mullan

Fun And Games!

Colour me quick before my step-sisters
come back!



Can you help Cinderella get to

CINDERELLA SEARCH

Can you find all the listed words in the pumpkin?

BALL

BUTTONS

CINDERELLA

COACH

DRESS

FAIRY

MAGIC

MICE

MIDNIGHT

PRINCE

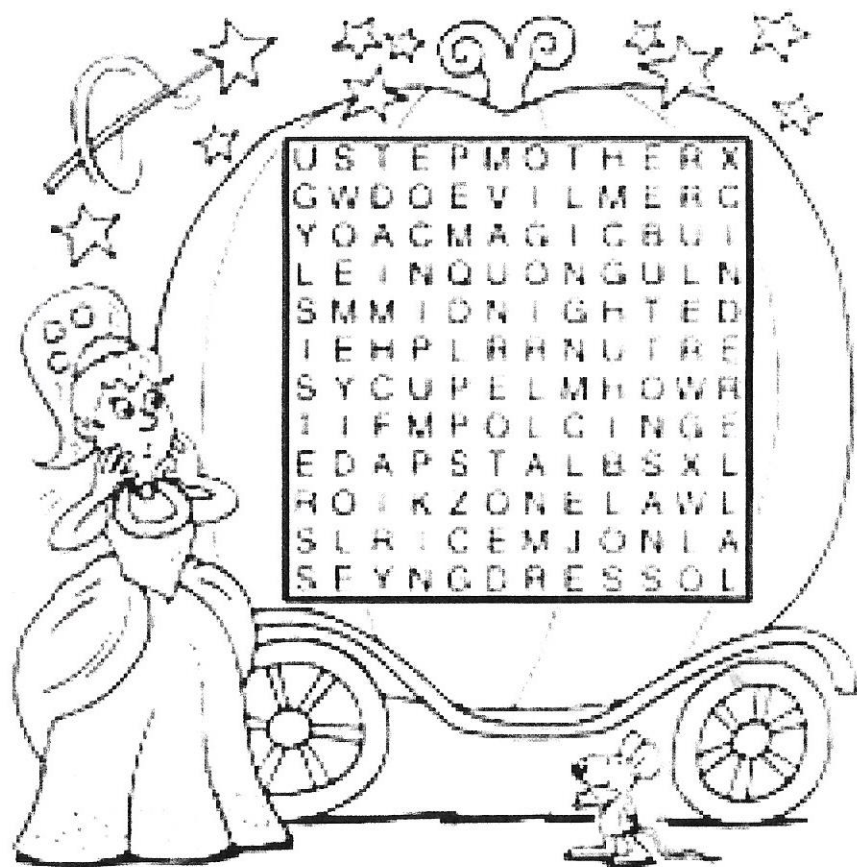
PUMPKIN

SLIPPER

STEPMOTHER

UGLY SISTERS

WAND



Presenting...



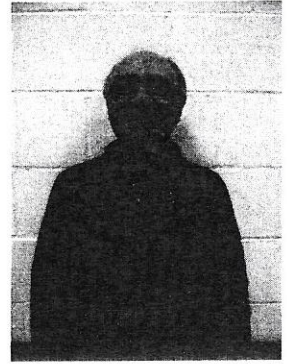
Sian Clare:
Cinderella

Sian first joined the Players in 2011 for Snow White, where she had her first main role as Scribbles. She says, *"The best thing about being at Peacehaven Players is having fun and laughs with the other members. I love acting because I love the feeling of fear yet excitement when performing – it's a scary sort of happiness as mad as that sounds!"* Outside of drama Sian is a fashion student, but she would ultimately like to study costume design in the future. She also loves pandas!



Mandie Fairhall:
Buttons

Mandie has been with the Players since 1999, appearing in her first show Sleeping Beauty. Her first main role was in Dick Whittington. She says, *"The reason I love being a member is getting the chance to sing and act, it's my absolute passion! I also love the social aspect of it, and being around friends doing something we love."* Mandie is a natural at playing comedy parts so expect some side splitting laughter!



Tony Garwood
Barron

Tony joined us in 2012 for his first show – Showstoppers. His first main role is as Alphonse in Beauty and the Beast. He says, *"The most enjoyable thing about being a member at Players is getting the chance to act! I have always enjoyed becoming someone else and giving enjoyment to others. I like working with others to create something special. Everyone is so very friendly here, you feel right at home from your first meeting"*.

...The Players



Dave Whatman:
Baroness

Dave has done many shows in the past both as performer and director and is not afraid to parade around in a dress! Dave says: *"I love performing with Peacehaven Players as they are such a warm, welcoming and talented group of people."* After being away for a few shows we welcome him back with open arms!



Tori Grant:
Gertrude

After an 8 year break from Performing Arts I found I missed performing far too much, so I decided to check out Peacehaven Players. Everyone was very warm and welcoming so it made it easy to come back and audition for this years Pantomime. However, nothing beats the feeling of performing in front of a live audience. I am very happy to be back doing what I love and only hope that our audience enjoy the show just as much!



Judith Foot:
Grizelda

Judith first joined Peacehaven Players in 2001, for Trial by Jury, with her first main role in Dick Whittington. She says, *"I love performing onstage, whether it's acting, singing or dancing, and being at Players has also given me the chance to direct. I have been singing all my life, before successfully auditioning for Brighton Schools Choir at 11, which led to me spending a season in Joseph and the Technicolor Dreamcoat at the Theatre Royal."*

Presenting...



Claire Mullan:
Prince Charming

Claire first joined Peacehaven Players as a junior in 2002 in *Oliver*, and then re-joined as an adult in 2010 for *The Wiz*. She says, "*The best thing about Players is without a doubt the people. I've made some lovely friends and it's nice to be a part of something so friendly. Acting is my absolute passion, it's what I want to do in life and therefore I'm pursuing my dream to become a professional actor, having already taken part in paid professional acting jobs.*"



Russell Sarrou:
Dandini

Russell originally joined the players as a junior in *Oliver*! "*Well once you get the itch, you can't stop!*". Russell has consistently been involved in productions ranging from his childhood through to college. Inter-performances between college and his social life have increasingly helped him into becoming a stronger performer.



Lynn Enever
Bodget

Lynn came and joined us after seeing her husband Nigel performing in our previous show *The WOW Factor*. She says: "*I was last on stage at the tender age of 15 (many, many years ago) and thought I would give it another shot. It's been such good fun and every rehearsal has turned out to be a joy just to be there.*"

...The Players



Dave Grant:
Legget

I have stepped in last minute to help fill a void after a cast member unfortunately had to pull out of the show. My wife is in the Pantomime so I thought I would give it a go even though I have never performed onstage before (unless you include the time I was a tree at Junior School!). To my surprise I have thoroughly enjoyed myself and have found everyone very friendly and fun to be around. I only hope that the audience laugh at my jokes or it could be a very short hobby!



Maureen Bywaters:
Fairy

Maureen is one of our longest serving members, having joined at the very beginning of the group in 1997. *"I love the social side of the Players as well as taking part in shows. I have always liked singing and acting but was too busy with my children until later on, when I had the time to finally join a company. Since joining I've also been involved with scenery and wardrobe, which is great as I love getting stuck into some sewing."*



Lynne Holman:
Front of house

Lynne has only been with Players for 3 shows, and Beauty and the Beast was her very first show! She says, *"The opportunity to meet new, like-minded people was great and they quickly became friends. It's my third show acting on stage but now that I've started I've caught the acting bug! I've always enjoyed watching shows in London and locally, so to be in one myself is definitely an exciting experience"*

Presenting...



Patricia Tuckett:

Chorus

Pat first joined the Players in 2005 and her first show was *Sinbad the Sailor*. Her first main part was in *The Wiz*, playing Dorothy's Aunt Em. Pat says, *"The most enjoyable part of being a member of Players is that it gives you a chance*

to be someone else, and taking part in shows is a great way to forget life's troubles for a while. I'm mostly in the chorus but I'm also a member of the wardrobe team, which is great as I like to sew!"



Carol Grant

Chorus

I joined Peacehaven Players this summer, after I was medically retired from my job last year after 23 years. I was missing my colleagues and my working environment (working with the public) which I enjoyed. I was encouraged by my daughter to go along with her to the Peacehaven Players open evening. Meeting all the members who were very welcoming, I decided this is just what I needed. I have made good friends, have helped out on some of the coffee mornings and most importantly have had good fun.



Mark Rushton:

Crew

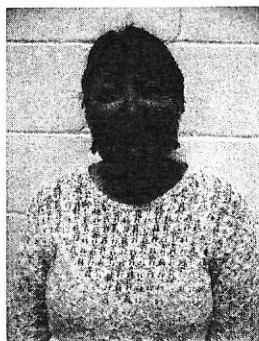
Mark first joined the Players in 2008, for his first show *Anything Goes*. His first main part was as Nurse Neralgia. He says, *"Players is great for meeting new friends and being part of a team – I love letting my alter ego loose! Being a member of Players has given me the opportunity to see both sides of theatre, having been onstage as well as crew for many shows, and there's nothing like the joy and buzz of a show, especially the adrenaline burst on opening night!"*

...The Players



Wendy Clare:
Director

Wendy has been with the Players since 2002, in her first show *Kiss Me Kate*. She says, *"Being in Players encourages us to expand our own experiences and I have had the opportunity to get involved with so many different activities, including set design and construction, make up, costumes, and directing/producing. As well as the opportunities, I also really enjoy the social aspect of Players, and I really like doing the coffee mornings and other fundraisers."*



Chris Jenner:
Chaperone

Chris first joined the Players in 2001 for her first show *Aladdin*. Although she doesn't get involved onstage, she's been roped in to do almost everything else! She says, *"Peacehaven Players is my husband Jim's hobby, I just came along to see what went on! I'm not quite sure how I ended up here 11 years later. I enjoy being at Peacehaven Players because it's a really good fun and social!"*



Jim Jenner:
Stage hand

Jim has been a member of Peacehaven Players since 2001, performing in his first show *"Aladdin"*. He says, *"The best thing about being a member of the Players is being part of a team and meeting new friends. I just love being on stage and sharing my acting experiences with others through group."* directing shows. Although it may not be a favourite of others, I really enjoy auditioning for new parts!"

Presenting...



Michele Harden:

Technical Manager

Michelle first joined the Players in 2010, and her first show was as crew for The Wiz.

She says, "Joining Players has been a great chance to design and paint scenery, and I love the joy of seeing my ideas come to life. There's nothing quite like the satisfaction of a job well done! The friendships and support at Players is great, and I feel very lucky to be Tech manager. I've learnt so much and have developed my painting and design skills on a big scale"



Daniel Rainsford:

Choreographer

Danny joined the Peacehaven Players in 2011, for his first show Snow White. He says, "I like being at Players because it's very sociable and I've made some fantastic friends. I love acting because it's so much fun to entertain and it's something so different from my usual working day. It's a great challenge to become someone else and make others believe in a character." He also admits he's way too obsessed with American TV programme Glee!

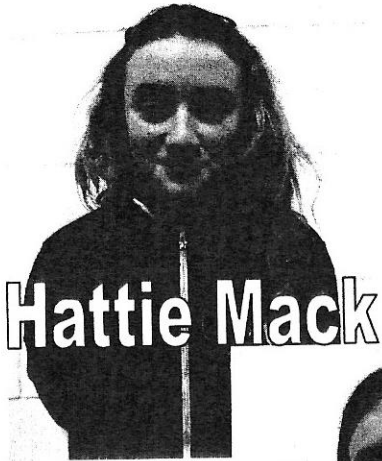


Joshua Winstone:

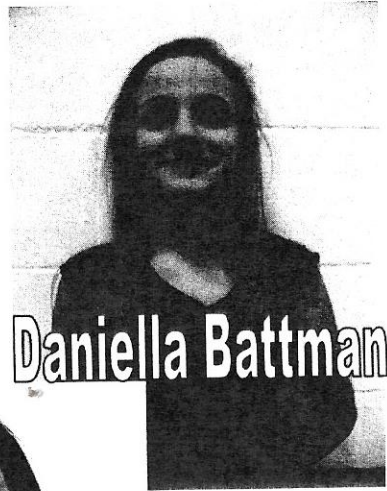
Musical Director

Josh recently joined the Players in 2012. He says, "Unlike other groups, Peacehaven Players feels like family – I know that whenever I go I will always be welcome. It's also a place of hard work and everyone pulls together to provide the best results. My passion for musical direction stems from my love of teaching people to sing and play instruments to the best of their ability, hopefully enjoying themselves and producing the best performance for the paying public."

...The Players



Hattie Mack



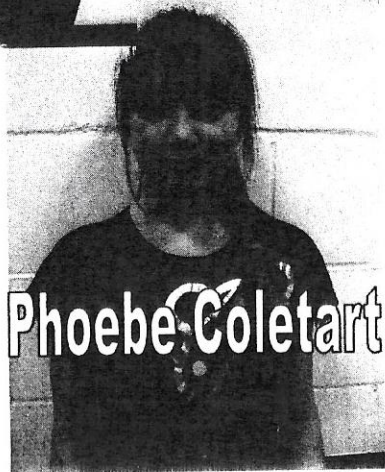
Daniella Battman



Sarah Harding



Leanne Battman



Phoebe Coletart

About Peacehaven Players

Peacehaven Players are a musical theatre group who stage two shows a year, a major summer production and a pantomime in the winter. We are an open company and new members are always welcome to join us without the need to audition.

Not an actor? We still want to hear from you. Peacehaven Players offers something for everyone, from working backstage to front of house, painting scenery, props, making costumes, or even just general help, there's always something for you to get involved in!

Our main aim at Peacehaven Players is, of course, to have fun. It's of utmost importance that we enjoy what we do, but it's not all about the acting! There's a great social side to being a member of the Players. We hold regular fund raising events such as coffee mornings and car boot sales, which is a great way to get to know everyone and meet even more members of the community. We also get together for meals and nights out for the chance to socialise outside of rehearsals.

We hope to see you soon!

Previous Shows

1998

The Boyfriend
London Town / Cinderella

1999

Fiddler on the Roof
Stepping Out
Sleeping Beauty

2000

Calamity Jane
That's Entertainment
Wizard of Oz

2001

Hello Dolly
Trial by Jury / Aladdin

2002

Kiss me Kate
Dick Whittington

2003

Oliver / Varsity Showtime
Jack and the Beanstalk

2004

Oklahoma
Babes in the Woods

2005

Blitz / A Night at the Musicals
Snow White

2006

My Fair Lady
Robinson Crusoe

2007

Radio Times
Cinderella

2008

Anything Goes
Sleeping Beauty

2009

Thank You For The Music
Little Bo Peep

2010

Chart Toppers
Aladdin

2011

The Wiz
Snow White

2012

Show Stoppers
Beauty And The Beast

2013

The WOW Factor
Cinderella

Patrons

Peacehaven Players would like to express our sincere thanks to our loyal patrons who have supported us over the years. Our current patrons are?

Sue Fairhall

Chris Fairhall

Roger Tant

Elsie Tant

Ian Ingle

Debbie Ingle

Terry Bywaters

As a community group the support we receive from you, our audience members, and our patrons is vital for the future of Peacehaven players. If you have enjoyed our shows and would like to show your support without becoming an active member, then why not become a patron?

Becoming a patron gives you the benefits of free tickets, concessions, a regular newsletter and a sneak peak at shows and "behind the scenes" action at special rehearsal evenings.

For an application form, or more information, please see our front of house team or contact us on:

01273 681861

Sing Along With Buttons!

What do you say to Cinderella?

Now she has got the Prince for a fella,
Spending all day with Cinderella,
Though I know she won't wait for me.

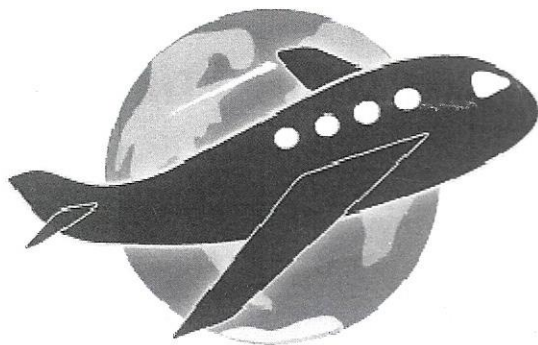
Sha la la la la la la la

Sha la la la la la la la

Sha la la la la la la la

Though I know she won't wait for me!

FLY ME!



This summer Peacehaven Players brings you another brand new show written once again by Judith Foot!

After the success of *The Wow Factor*, Judith Foot has put pen to paper and come up with a brand new concept. *Fly Me!* is a feel good comedy set in a small English airport, but wait, the aeroplane is taking off, the passengers are winging their way across continents and arriving in exciting destinations. Will their holidays be ooh la la or chips with everything?

You won't want to miss this fast paced situation comedy set to all your favourite songs. Who knows where it will take you!